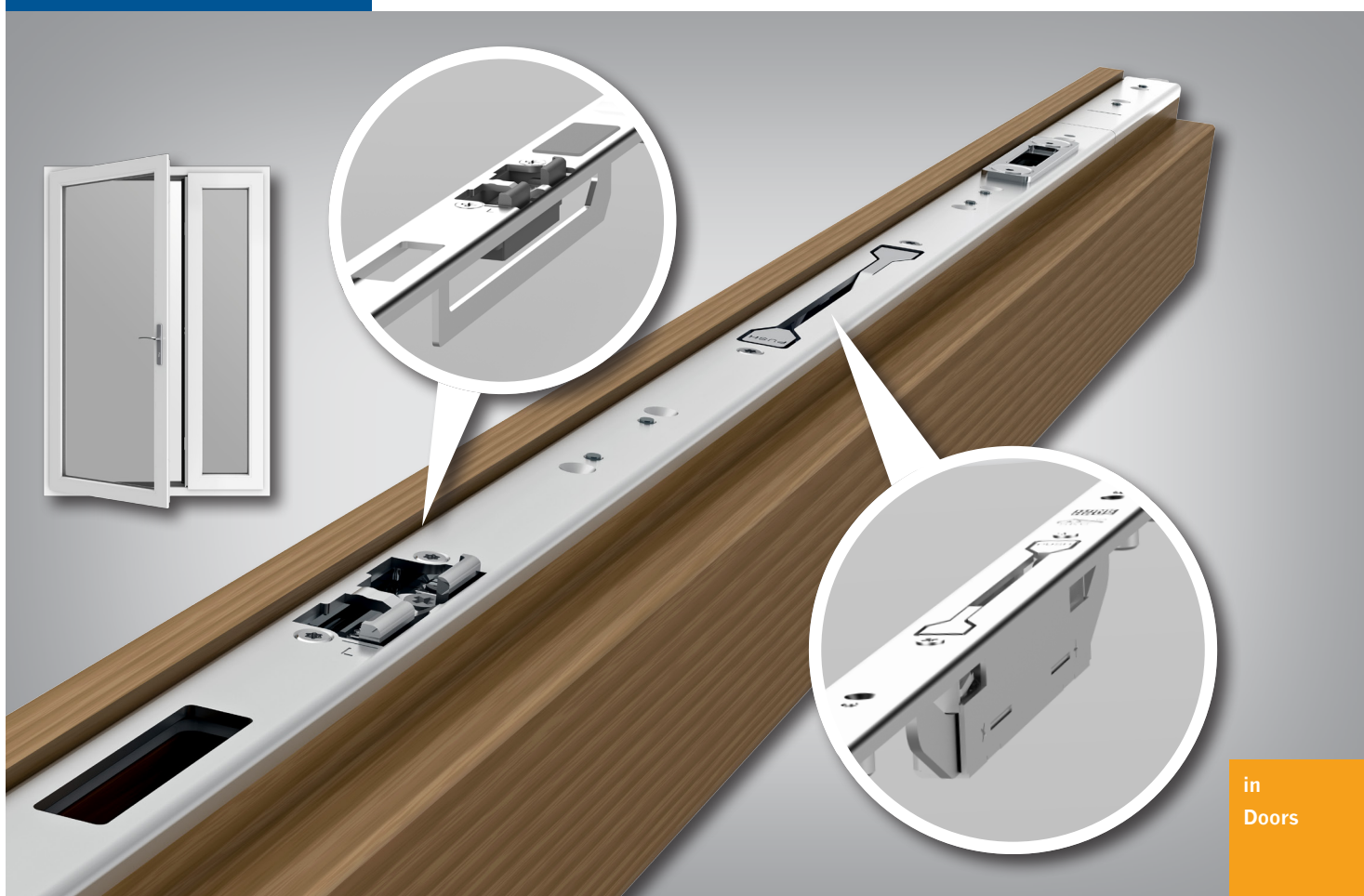


Winkhaus FAB Slave Door Locks

For PVCu, Aluminium, Timber and Composite Doors



in
Doors



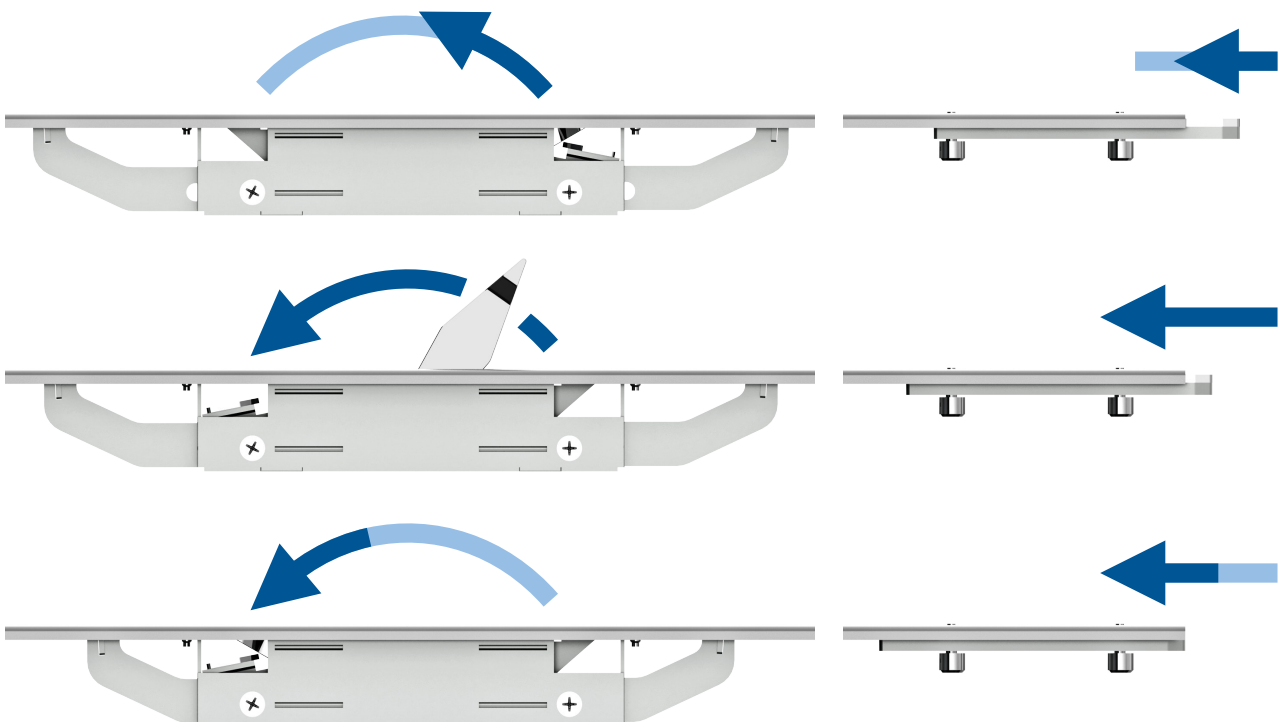
Shootbolt keep rails with integrated shootbolts

The Winkhaus FAB slave door lock range provides a high security locking option WITHOUT the need for a security Kitemark cylinder, cylinder guard or a security handle. Operated by a flush, integrated two way lever the FAB slave lock throws two heavy duty 20mm shootbolts into the head and cill. Combined with the renowned Cobra™ or Trulock+ Multi-Point lock on the master door the locking hooks penetrate the FAB Slave lock to secure the two leaves together. No additional hook keeps are required. Substantial shootbolt keeps have +/- 2mm of adjustment for ease of operation.

Unlike conventional PVCu Double doors a dummy mullion is not required which can dramatically reduce sightlines. The FAB system requires doors with opposing eurogrooves.

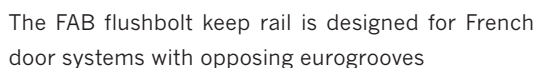
With a size range from 1853mm to 2781mm the flexibility is exceptional and is ideally suited to the trend towards taller French doors and for main entrance doors with a operating side panel. These types of doors are being increasingly specified for wheelchair access or for moving large pieces of furniture in or out of the building.

- An attractive alternative to normal slave door locks.
- Secure U26 keep rail with 20mm long laminated steel top and bottom shootbolts.
- Easily operated by the convenient operating lever.
- Quickly installed in the slave leaf of double doors (Requires doors with opposing eurogrooves).
- Removes the need to handle and cylinder.
- Ideal for double doors with irregular sash widths.
- Variants to suit Winkhaus standard, short and tall (3 Hook) locks.
- Integral bottom shootbolt giving 1050mm handle height.
- To suit sash heights 1853 - 2781mm.
- SKG **





Specification for standard doors, variant 60

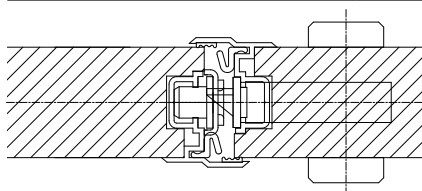


- (1) STV lock (variant 60 - standard height)
- (2) FAB Flushbolt keep rail
- (3) Shootbolt (croppable)
- (4) Shootbolt Keep

| Article description | Article No. |
|---|-------------|
| U26-BN13 Flushbolt: | |
| For sash rebate heights: 1998 - 2426mm | |
| Handle position 1050mm | |
| Total length 1885mm | |
| Shootbolt keep rails | |
| U26-BN13-60 Flushbolt MV2 RH V1 | 5048963 |
| U26-BN13-60 Flushbolt MV2 LH V1 | 5048967 |
| Shootbolts | |
| STV-ASS Shootbolt U256/26 (113 - 256mm) | 4934257 |
| STV-ASS Shootbolt U399/26 V1 (229 - 399mm) | 5055298 |
| STV-ASS Shootbolt U541/26 (399 - 541mm) | 4934262 |

Notice

Overall for screwing use min. Ø 4,0 x 40 mm for lock and frame parts.





Technical drawing of the 1050 Series extrusion, showing front and side views with dimensions in millimeters.

Front View Dimensions:

- Overall Length: 2240
- Section 1: 756
- Section 2: 1089
- Section 3: 734
- Section 4: 284
- Section 5: 290
- Section 6: 216
- Section 7: 98.5
- Section 8: 117.5
- Section 9: 63
- Section 10: 86
- Section 11: 113 - 541

Side View Dimensions:

- Overall Length: 2400
- Section 1: 581
- Section 2: 186
- Section 3: 92
- Section 4: 53
- Section 5: 86
- Section 6: 4.5
- Section 7: 113
- Section 8: 355
- Section 9: 113
- Section 10: 600
- Section 11: 2400

Other Dimensions:

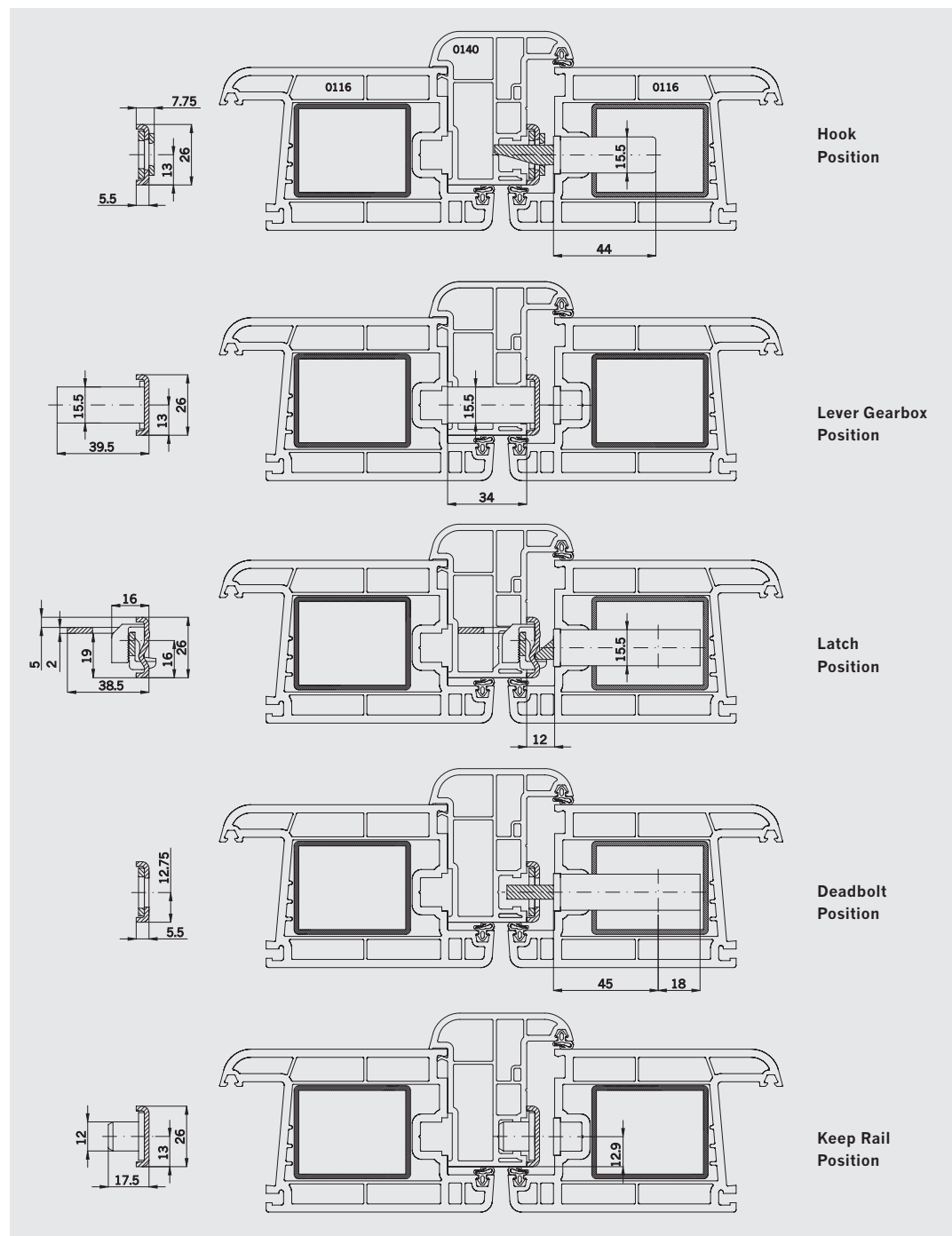
- Handle Height: 1050
- Crappable: Indicated at the ends of the extrusion.

Overall for screwing use min. Ø 4,0 x 40 mm for lock and frame parts.



Shoot bolt keep rail U26-BN13 with integrated shoot bolts for PVCu doors

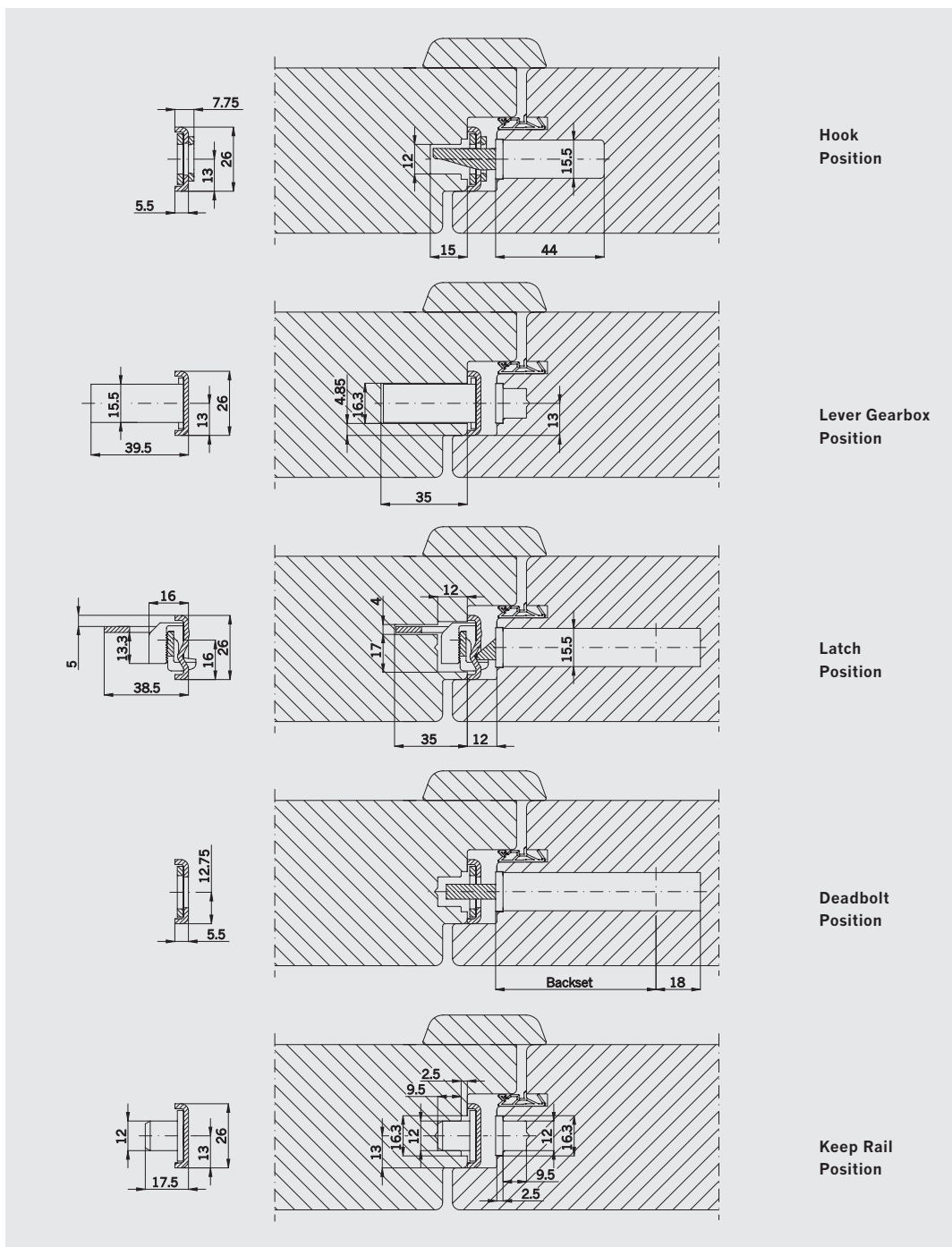
Installation drawings





Shoot bolt keep rail U26-BN13 with integrated shoot bolts for Timber doors

Installation drawings



Winkhaus UK Ltd

2950 Kettering Parkway, Kettering,
Northants NN15 6XZ

Tel: +44 (0)1536 316000

Fax: +44 (0)1536 416516

www.winkhaus.co.uk

email: enquiries@winkhaus.co.uk